

# SAN MICHEL OF THE POLO CLUB

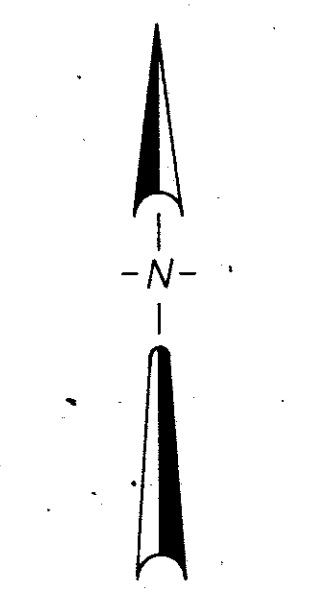
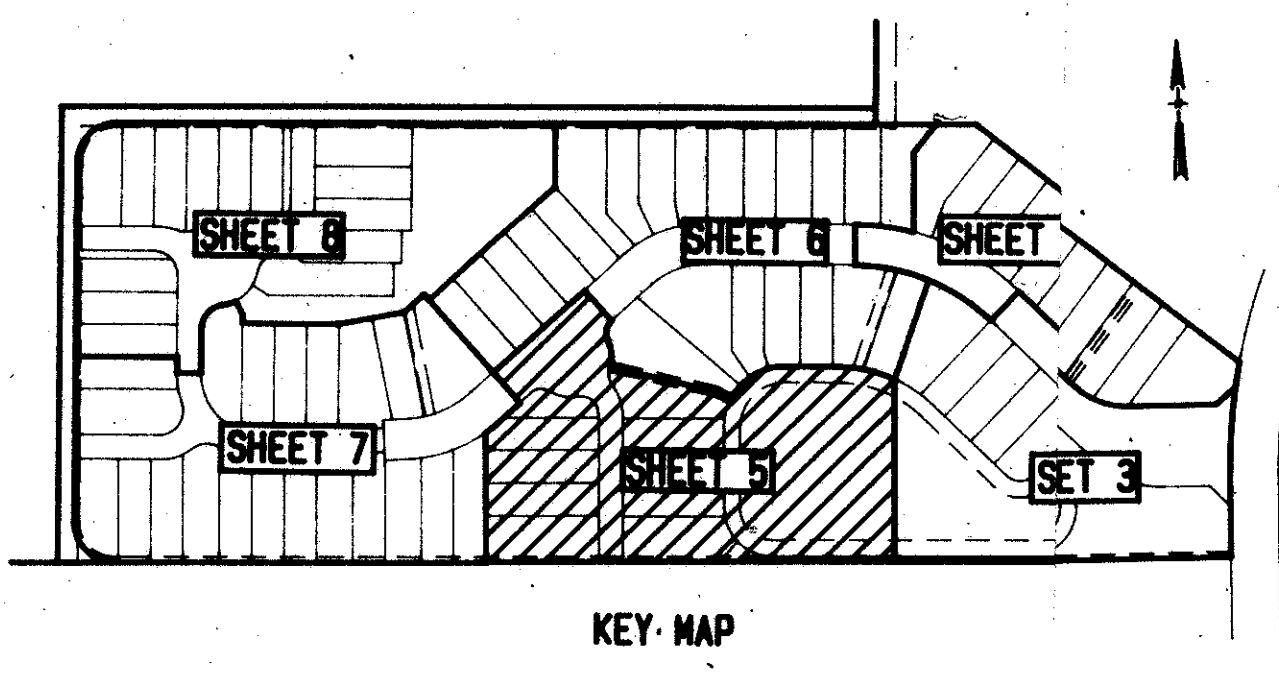
## A PART OF THE POLO CLUB P.O.D.

BEING A REPLAT OF A PORTION OF TRACT I, "THE POLO CLUB PLAT 111" (P.B. 59, PGS. 110-112)  
AND PART OF SECTION 27, TOWNSHIP 46 SOUTH, RANGE 42 EAST  
PALM BEACH COUNTY, FLORIDA

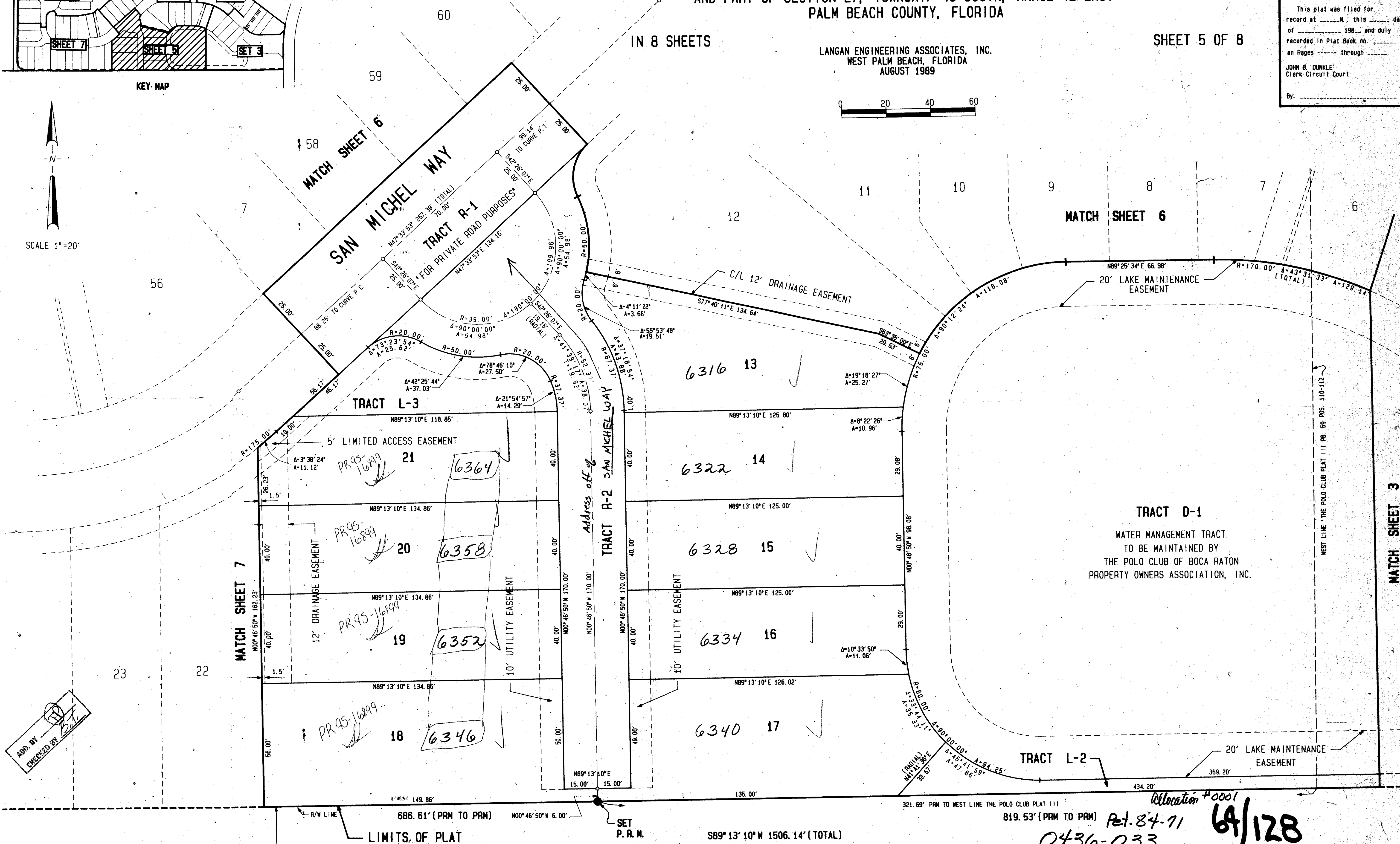
STATE OF FLORIDA  
COUNTY OF PALM BEACH  
This plat was filed for  
record at \_\_\_\_\_ M. this \_\_\_\_\_ day  
of \_\_\_\_\_ 1989, and duly  
recorded in Plat Book no. \_\_\_\_\_  
on Pages \_\_\_\_\_ through \_\_\_\_\_  
JOHN B. DUNKLE  
Clerk Circuit Court  
By: \_\_\_\_\_ D.C.

SHEET 5 OF 8

LANGAN ENGINEERING ASSOCIATES, INC.  
WEST PALM BEACH, FLORIDA  
AUGUST 1989



SCALE 1"=20'



SUBDIVISION \*San Michel of the Polo Club  
BOOK 64 / PLAT 128  
FLOOD ZONE B / TRACT 128  
QUAD # 37 / TOWNSHIP 46 SOUTH  
SE 84-71 / RANGE 42 EAST  
PUB. MAPS San Michel of the Polo Club (P.O.D.)  
27/16/89 TAE 477

APP. BY [Signature]  
CHECKED BY [Signature]

COMPUTED MAY 1989  
DRAWN C.K.  
CHECKED W.P.  
COMMENTS J.W.  
APPROVED  
REVISION

LAKE WORTH DRAINAGE DISTRICT CANAL L-38  
(ORB. 4299, PG. 552, ORB. 5290, PG. 1264)

Allocation #0001  
819.53' (PRM TO PRM) Pet. 84-71  
0436-033  
6/128

# SAN MICHEL OF THE POLO CLUB

NOTE: LINES NOT RADIAL TO ACCESS  
TRACT LINES UNLESS INDICATED  
THIS INSTRUMENT PREPARED BY  
VECTOR A. PEREZ P.L.C.  
269 DRETT HILL BLVD, SUITE 204  
WEST PALM BEACH, FLORIDA, 33406